

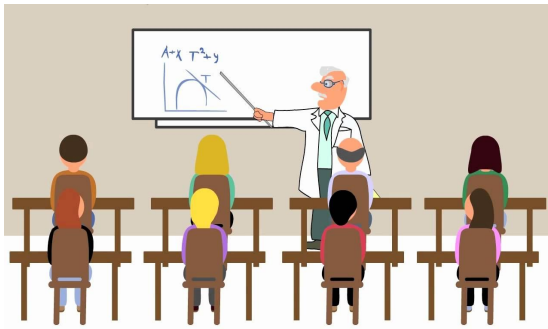
## Student Instructional Reference Guide

This school year, we will be engaging in three types of online modes

### 1) Traditional In-person 2) Asynchronous On-line Learning, and 3) Synchronous Learning

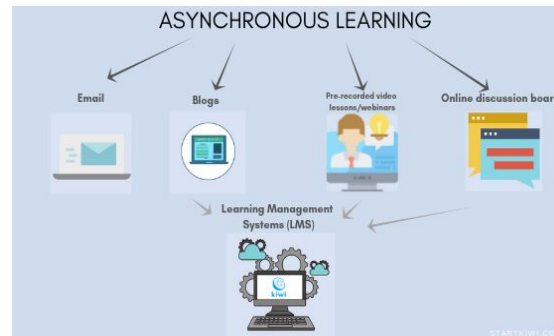
We would like you to understand what each mode means, and your role as the student within these models to ensure you are learning successfully.

#### Traditional In-Person Learning



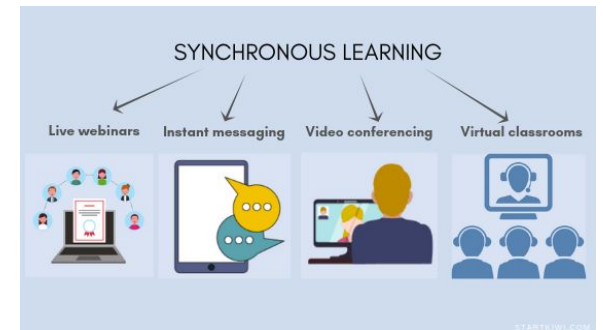
In-person, traditional face-to-face learning.

#### Asynchronous On-Line Learning

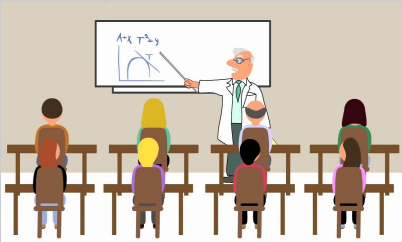
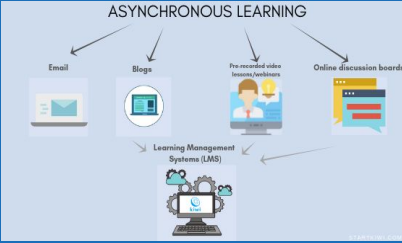
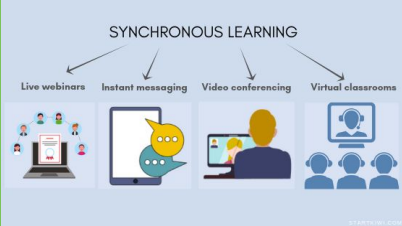


Organized activities & content aligned to curriculum and learning targets, in which students work independently.

#### Synchronous On-line



Facilitated instruction, collaboration and support for students through virtual, face-to-face instruction and activities.

	Platforms	Students will...	Resources
<p><b>Traditional In-Person Learning</b></p> 	<p><b>Google Classroom Pinnacle</b></p>	<ul style="list-style-type: none"> <li>-Accept all of their teacher Google Classroom invites</li> <li>-Organize themselves in a way for them to understand how to navigate each classroom</li> <li>-Check their classrooms frequently</li> <li>-Understand when their assignments are due.</li> </ul>	<p><b>Zoom Directory</b></p> <p><a href="#">Student Online Resources</a></p>
<p><b>Asynchronous On-Line Learning</b></p> 	<p>When learning independently online, students will access organized activities such as:</p> <ul style="list-style-type: none"> <li>-Playlists</li> <li>-Videos with assignments attached</li> <li>-Clear directions and connection to learning goals.</li> </ul>	<ul style="list-style-type: none"> <li>-Know where to find their assignments for the day.</li> <li>-Follow the directions of the playlist</li> <li>-Understand how to complete the activities, and what they need to do as they complete the playlist.</li> <li>-Contact the teacher if the student has any questions.</li> </ul>	<p><b>Zoom Directory</b></p> <p><a href="#">Student Online Resources</a></p>
<p><b>Synchronous On-line Learning</b></p> 	<p><b>Zoom Distance learning all students are in attendance</b></p>	<ul style="list-style-type: none"> <li>-Be on time to class</li> <li>-Participate in class discussion via speaking or through the chat</li> <li>-Understand the expectations and norms</li> <li>-Review Learning Goals</li> <li>-Complete work by their due date</li> <li>-Ask questions.</li> <li>-Communicate with the teacher.</li> </ul>	<p><b>Zoom Directory</b></p> <p><a href="#">Student Online Resources</a></p>